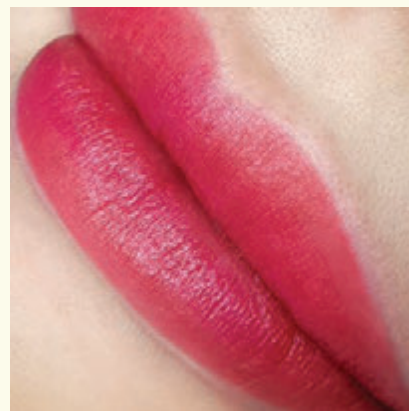


MEI·CHA L U M I DIGITAL DEVICE SYSTEM TESTIMONIALS



“As a Master International Trainer, I have worked with a variety of Permanent Makeup devices throughout my career. I love LUMI because it is a light weight, easy to use, affordable option for my students. My favorite needle is the Ultra Precision Single Liner.”

— MONICA IVANI



I'm loving working with my new Lumi from Meicha! Knowing I was ready to transition to machine work, I did quite a lot of research but was overwhelmed by all the PMU machines on the market. I finally decided to pull the trigger on the Lumi based on my confidence in Meicha products as a whole and the level of customer support available from the Meicha team, and I wasn't disappointed by that decision! The first time I got my hands on the Lumi was my first experience with a PMU machine and I was expecting to be a little intimidated by the settings and the vibrations, but I was able to get set up and ready to rock in just a few minutes and I was pleasantly surprised at how minimal the vibrations felt in my hand. The design and settings are simple and efficient, the foot pedal is great, the hand piece is easier to control than I anticipated and it feels designed for a woman's hand, it just fits! Plus, it's pretty and looks great in my studio. Overall, I couldn't be more pleased with my Lumi!

— ANNA REED

“I love the super chic design of the LUMI machine. The cartridge needles are a wonderful feature and I love using it for just about every PMU procedure I offer.”

— VALERIE WEBER



“We are currently working on the Lumi device and we are very pleased. We recommend the device to our students as well. In April 2019, Paulina will represent her Academia at www.pmugold.com. She will present her microblading technique with Midas cutters.”

— PAULINA BOBER

